

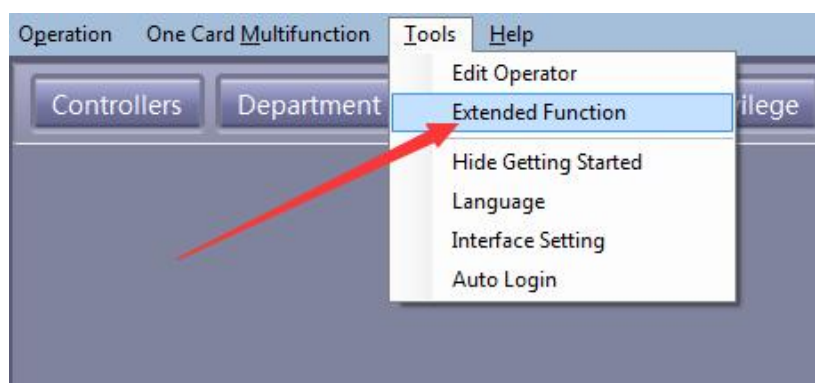
## **Stage 1.** For super Master code to open lock, **video below:**

[https://www.youtube.com/watch?v=gnM6\\_xFRNPE&feature=youtu.be](https://www.youtube.com/watch?v=gnM6_xFRNPE&feature=youtu.be)

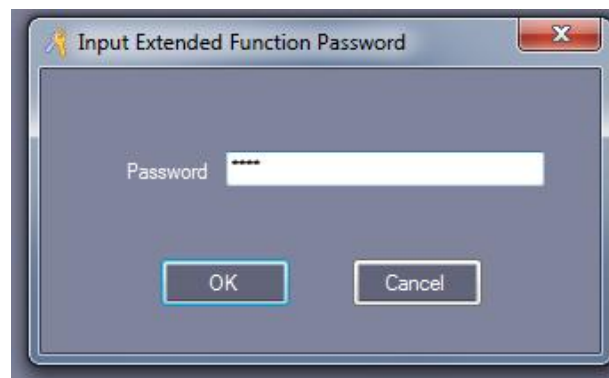
each **door** have **maximum 4** passwords.

Detail Manual as below:

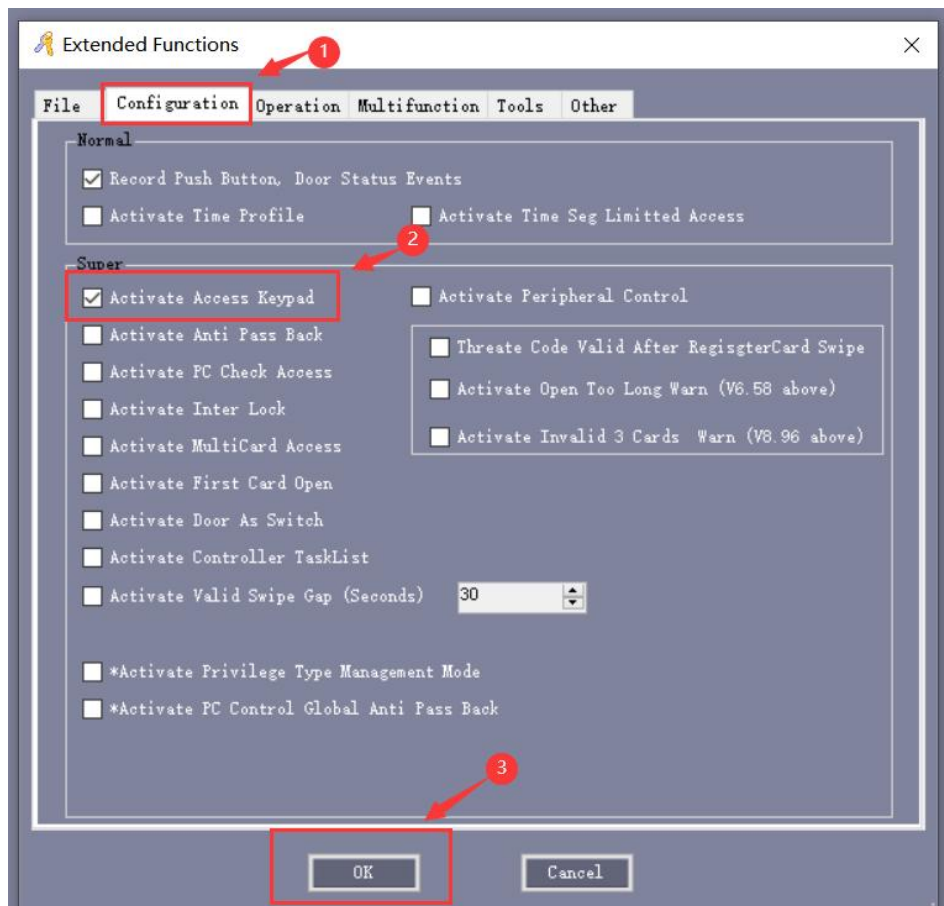
**Step1:** In the software window, click menu->“Tools”, then click “Extended Functions”, then input “5678”, you will see a lot of rich feature list.



**Input: 5678**



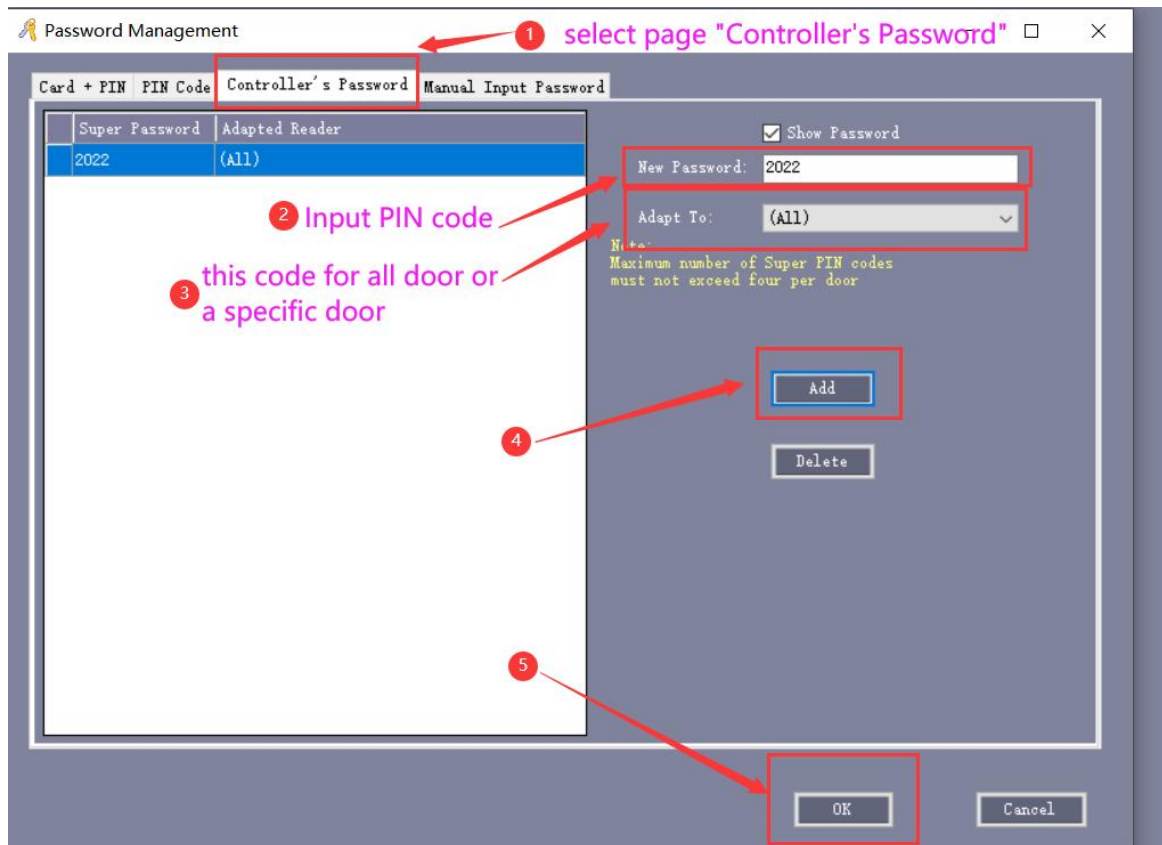
**Step2:** Then select page “Configuration” and check the check box “Activate Access Keypad” and click ok. **Software will re-start automatically.**



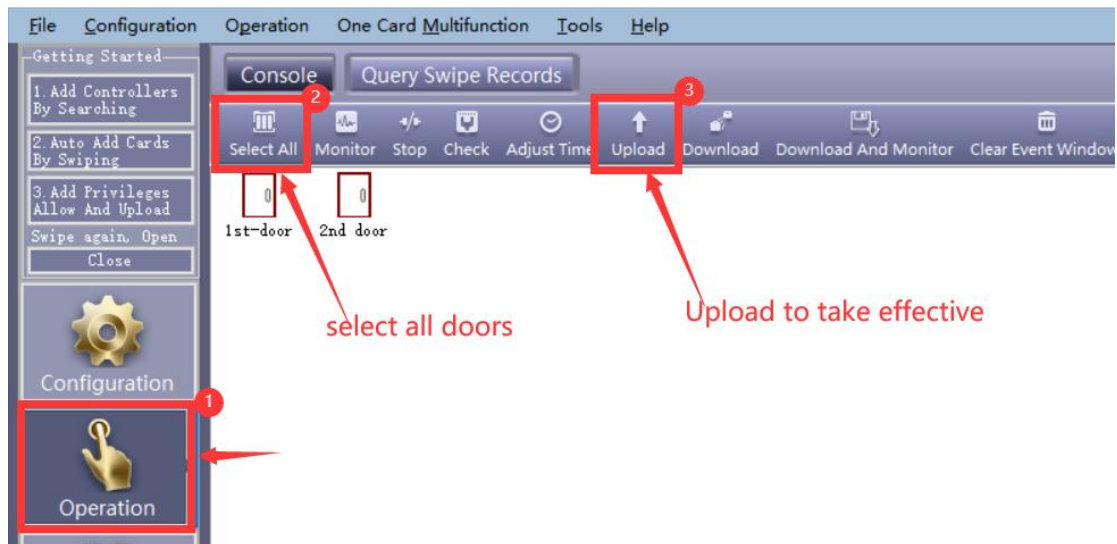
**Step3:** Select **【Configuration】** > **【PWD MGT】** as below:



As below picture, Select page: **【Controller's Password**, input new PIN code, add, then press OK.



**Step4:**After the setting, **remember** to **upload** all settings:



### Step5: Testing

Then user can open door by:

- If the keypad **ENT** or **#**, Press **PIN number ENT / PIN #** to open door. For example, for above 2022 code, press: 2022, then ENT Key, **or** press: 2022, then #